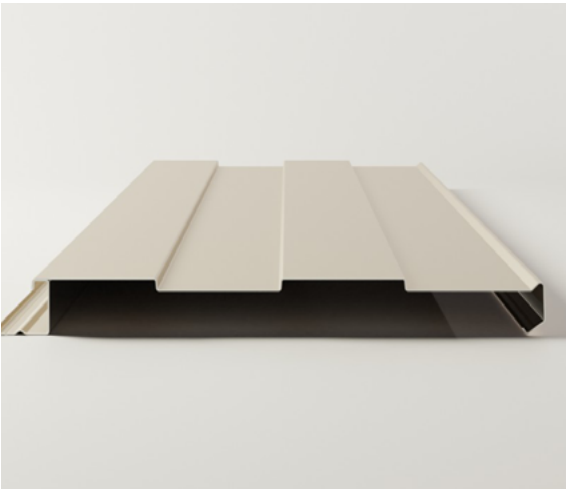
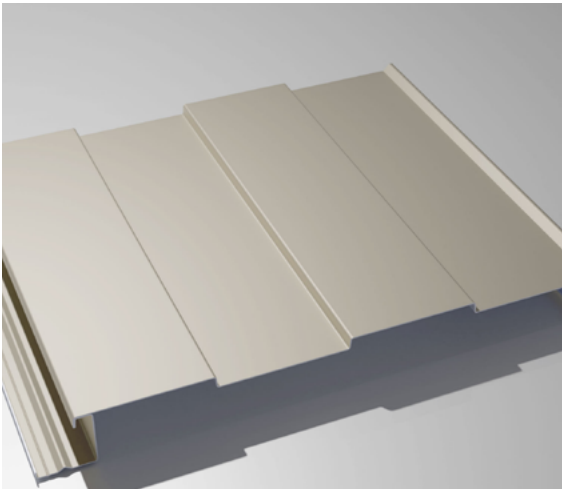




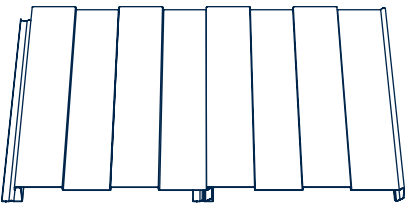
FLUTED-16

Fluted-16 is a concealed fastener wall panel.
It is available in 24 gauge only.

- Texas Department of Insurance*
- Florida Product Approval*



Side Lap Detail



Two Panels Shown
Above

DESIGN PROPERTIES						
PANEL GAUGE	F _y (KSI)	WT (PSF)	TOP IN COMPRESSION		BOTTOM IN COMPRESSION	
			I _x (in ⁴)	M _a (Kip-in)	I _x (in ⁴)	M _a (Kip-in)
24	50	1.85	0.0933	1.7127	0.1687	3.0950

- NOTES:
1. All section properties are calculated in accordance with the North American Specification For Design Of Cold-Formed Steel Structural Members.
 2. Design Properties tabulated above are based on a full panel coverage width.