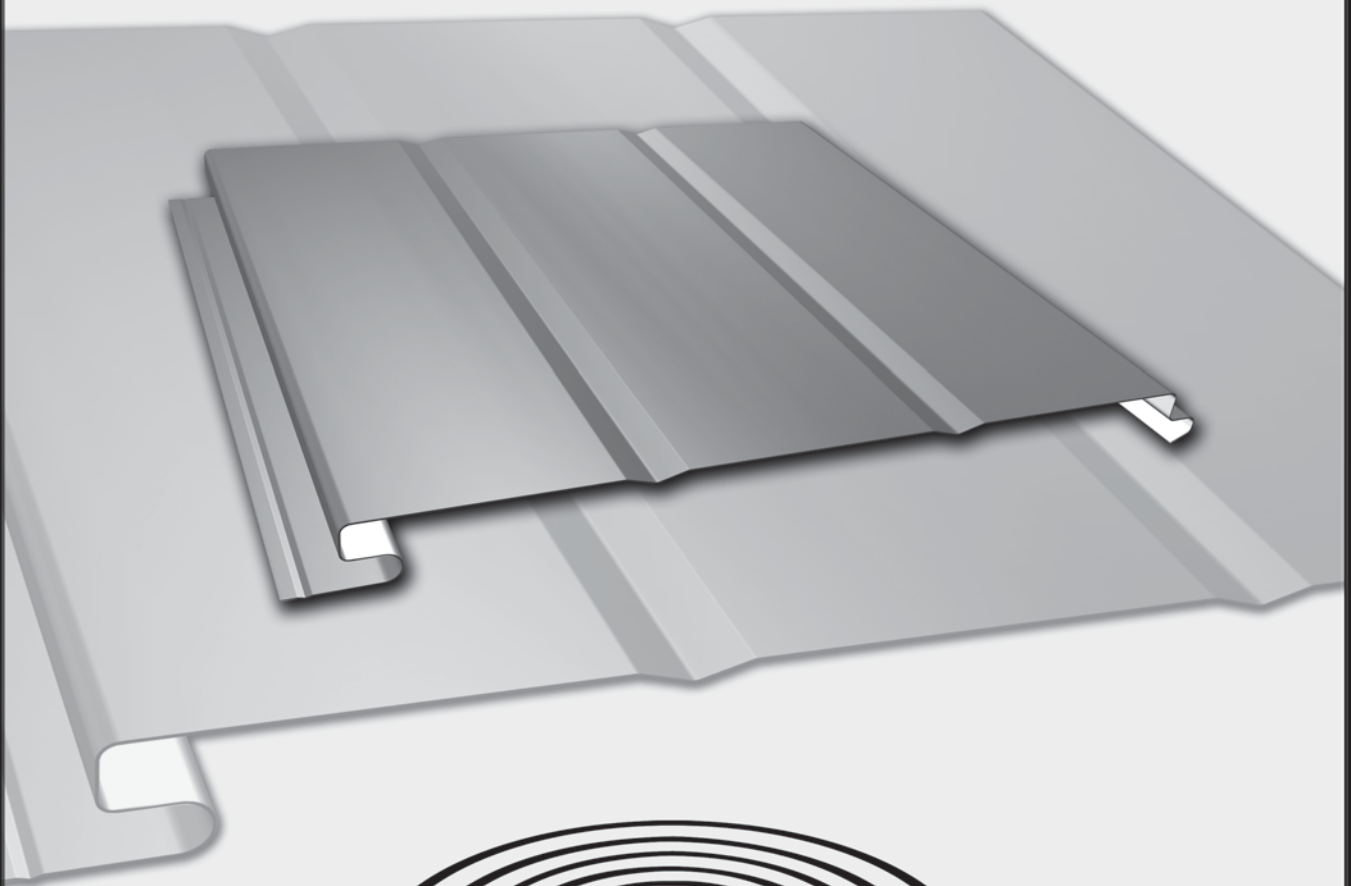


TECHNICAL ERECTION MANUAL

ACCENT 11



WHIRLWIND STEEL BUILDINGS, INC.

BUILDING SYSTEMS / BUILDING COMPONENTS / SOLAR ENERGY SYSTEMS

WWW.WHIRLWINDSTEEL.COM

IMPORTANT NOTICE

READ THIS MANUAL COMPLETELY PRIOR TO BEGINNING THE INSTALLATION OF THE ACCENT 11 PANEL.

IF THERE IS A CONFLICT BETWEEN PROJECT ERECTION DRAWINGS PROVIDED OR APPROVED BY WHIRLWIND BUILDING SYSTEMS AND DETAILS IN THIS MANUAL, PROJECT ERECTION DRAWINGS WILL TAKE PRECEDENCE.

©Copyright Whirlwind Steel Buildings, Inc. All Rights Reserved.

Descriptions and specifications contained herein were in effect at the time this publication was approved for printing. In a continuing effort to refine and improve products, Whirlwind reserves the right to discontinue products at any time or change specifications and/or designs without incurring obligation. **To insure you have the latest information available, please inquire or visit our Web Site at www.whirlwindsteel.com.** Application details in this manual may not be appropriate for all environmental conditions, building designs, or panel profiles. Projects should be engineered to conform to applicable building codes, regulations, and accepted industry practices. Insulation is not shown in these details for clarity.



WHIRLWIND STEEL BUILDINGS, INC.

BUILDING SYSTEMS | BUILDING COMPONENTS | SOLAR ENERGY SYSTEMS

8234 Hansen Rd. | Houston, TX 77075 | (Phone) 713.946.7140 | 800.324.9992

Accent 11

TABLE OF CONTENTS

GENERAL INFORMATION	A-2
PANEL PERFORMANCE WARNINGS	A-3
SAFETY AND ERECTION NOTES	A-4
PANEL ATTACHMENT DETAIL	A-5
OUTSIDE CORNER DETAIL	A-6
INSIDE CORNER DETAILS	A-7
LINER AT FRAMED OPENING	A-8
SOFFIT AND FASCIA DETAILS	A-9
LINER CAP TRIM DETAIL	A-10
LINER AT COLUMN DETAILS	A-11
LINER TO ROOF DETAILS	A-12
LINER AT OVERHEAD DOOR	A-13



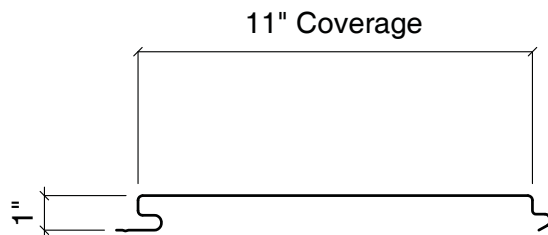
WHIRLWIND STEEL BUILDINGS, INC.

BUILDING SYSTEMS | BUILDING COMPONENTS | SOLAR ENERGY SYSTEMS

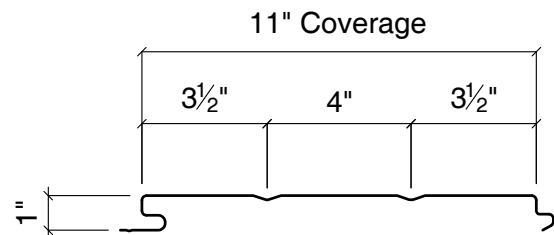
8234 Hansen Rd. | Houston, TX 77075 | (Phone) 713.946.7140 | 800.324.9992

Accent 11

GENERAL INFORMATION



ACCENT-11 PANEL



ACCENT-11R PANEL

1. Accent-11 and Accent-11R are concealed fastener panels that provide a smooth appearance.
2. The Accent-11(R) panel is attached to the structural members using a #12 x 1" self-drilling screw without sealing washer. This fastener is installed from outside the building and no pre-drilling is required. The structural members must be properly aligned to prevent oil-canning in the panels.
3. All trim is connected to the Accent-11(R) panel with pop rivets to maintain a smooth appearance.
4. The maximum length of this panel is 40'-0". Panels may be spliced using Whirlwind's splice trim for continuous runs over 40'-0".



WHIRLWIND STEEL BUILDINGS, INC.

BUILDING SYSTEMS | BUILDING COMPONENTS | SOLAR ENERGY SYSTEMS

8234 Hansen Rd. | Houston, TX 77075 | (Phone) 713.946.7140 | 800.324.9992

Accent 11

PANEL PERFORMANCE WARNINGS

The building panels are manufactured to the highest quality standards, offering long-term durability and performance. To assure optimum panel performance, special precautions must be taken while the panels are in a packaged state. Please take notice of the followings WARNINGS to insure that your panels are properly protected prior to installation and installed properly. Failure to follow these recommendations could void any panel warranty.

A. JOBSITE STORAGE

1. All building panels are extremely vulnerable to finish deterioration from moisture when in the nested, packaged condition. Long term storage of these panels (over 30 days) in the nested, packaged condition can be detrimental and may void the panel finish warranty. Erect panels immediately upon receipt for best results.
2. The wrapping used in the packaging is designed to aid in the resistance of wind blown moisture during transit and job site storage prior to panel installation. All packages of panels should be inspected for the presence of moisture upon arrival. If moisture is present, panels must be separated and allowed to dry completely prior to restacking. Under no circumstances should panels be allowed to remain nested in a wet or damp state.
3. Moisture can form between dry panels from temperature changes alone. This can happen even when kept undercover, out of the elements, and especially in winter. It is very important to install all panels as soon as possible.
4. Job site storage is the responsibility of the buyer and should always include tarping and the elevation of one end of every panel package to aid in the draining of any moisture that may accumulate between panels. Panels should always be stored above rising water levels.
5. Panels with evidence of water stain, paint blistering or other defects attributed to improper or long term field storage will not be eligible for claim.

B. INSTALLATION

1. All metal shavings or iron fines created during the erection process by drilling holes, cutting, or sawing must be swept off of the roof and wall panels daily. Failure to do so may cause permanent rust stains on the painted surface. Claims will not be accepted for this problem.
2. Cutting of panels or trim with circular saws is strongly discouraged. The fine metal particles created are hot and will embed themselves into any painted surface they contact. Removal of all of these particles is nearly impossible and will cause rust spots on the painted surfaces. This problem occurs most when cutting endwall panels to slope or cutting around wall openings. Claims will not be accepted for this problem.
3. All panels should be installed in a manner that the bottom cut edge of the panels is at least 1/4" above any direct contact with the concrete recess. The lime in the concrete will react with the aluminum in the GALVALUME® coating and cause coating failure and edge rust. Claims will not be accepted for this problem.
4. All panels installed with blanket insulation should follow this WARNING. Never cut the insulation off even with the edge of the panels as this will cause "wicking" of moisture and panel rust. Always fold back the insulation, with facing outward, at least 1" away from the panel edge.
5. Some panels are furnished with a protective, peel-off film. This film must be removed prior to field installation. Do not expose the panels to sunlight without immediate film removal. Film must be removed from non-exposed panels within six months after film application or irreparable damage will occur to the panel surface. Claims will not be accepted for this problem.



WHIRLWIND STEEL BUILDINGS, INC.

BUILDING SYSTEMS | BUILDING COMPONENTS | SOLAR ENERGY SYSTEMS

8234 Hansen Rd. | Houston, TX 77075 | (Phone) 713.946.7140 | 800.324.9992

Accent 11

SAFETY AND ERECTION NOTES

PANEL SAFETY WARNINGS

1. These panels should be installed by a qualified professional that is knowledgeable with the proper installation of metal building panels and the safety precautions required.
2. Never install panels without wearing a tied-off safety harness and/or using a safety net as required by OSHA.
3. Unpainted secondary panels may have protective oil and/or metal working lubricant residues on their surfaces. Painted panels are coated with a wax to protect the painted surface during shipment. All panels should be viewed as extremely slippery, even if dry.
4. Never install or walk on wet building panels. Panels become extremely slippery when wet and could cause slippage or injury.
5. Take extreme care when walking on panels early in the morning as morning dew could be present and cause panels to be extremely slippery.
6. Never install panels in inclement weather (i.e. ice, snow, rain, lightning, etc.) as slippage or injury could occur.
7. All sloped roofs are dangerous. Be extremely careful when working on any sloped roof to avoid slipping or loss of balance.
8. Never install panels on windy days. Installers may be subject to injury if wind gusts cause them to lose their balance while carrying panels.
9. Be extremely careful installing panels (or any other steel or metal items) near electrical lines as these panels or items will conduct electricity and could cause electrocution.
10. Never walk on the top panel of an unsecured package of panels. The top panel will slide easily and may cause a fall and/or injury.
11. Never leave a bundle of panels unsecured on the sloped roof of a structure. The panels could slide off the roof like a "deck-of-cards" causing injury to those on the ground.
12. Always handle panels with care as all panel edges are sharp and can easily cause injury. Whenever possible, use gloves when handling.
13. **DO NOT WALK ON LIGHT TRANSMITTING PANELS!** Light transmitting panels must not be used for foot traffic nor should they support the undistributed weight of any individual. Roofing ladders or 1" x 12" planks must be used during installation, maintenance, or repair problems.

GENERAL ERECTION NOTES

1. Make sure the building or structure is square and plumb before installing the sheeting and trim.
2. The drilling of holes in the roof panels by either the screws or a screw gun will leave metal shavings on the roof. These shavings must be swept from the roof each day to prevent surface rust. This rust may damage the panel finish and will void the panel warranty.
3. Do not cut any panels with a circular saw after they have been installed. The hot shavings may collect on the panel surface and damage the panel finish, voiding the panel warranty.
4. Stitch screws are used for panel to panel and/or panel to trim attachments. Member screws are used to attach panels and/or trim to the structurals. Either of these fasteners may be self-drilling or self-tapping, depending on which was ordered.
5. Some panels may require bevel cuts (i.e. hip condition, valley condition, endwall panels, etc.). All bevel cuts will be done in the field by the installer.
6. Rake trim, eave trim and gutter lap 2". All other trims lap 1".
7. Make sure all tape sealants and caulking are installed without any gaps or breaks.
8. The following pages show examples of standard conditions. Refer to your salesperson for assistance with non-standard conditions.



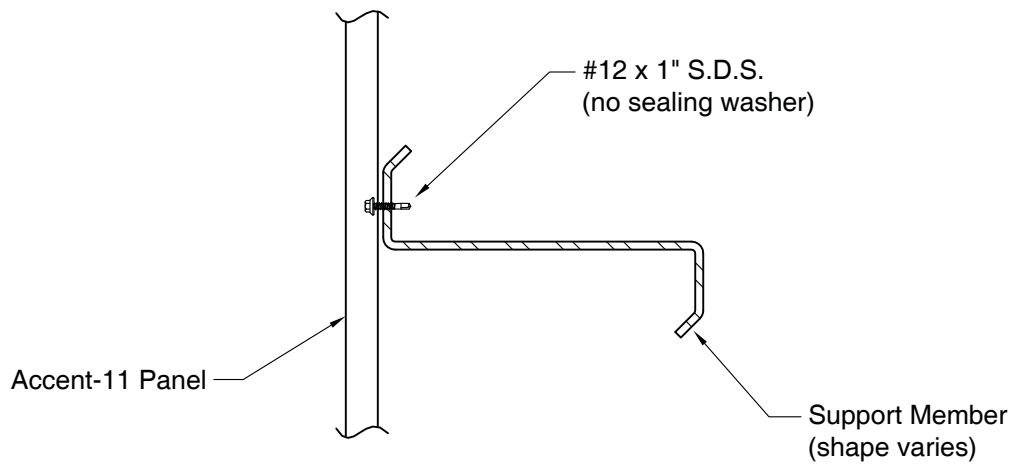
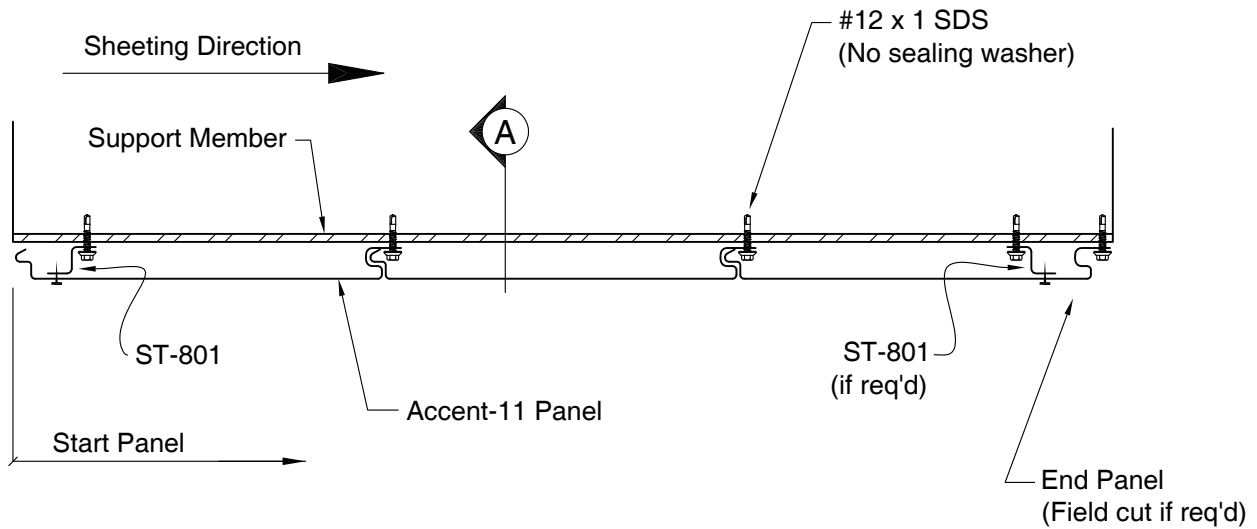
WHIRLWIND STEEL BUILDINGS, INC.

BUILDING SYSTEMS | BUILDING COMPONENTS | SOLAR ENERGY SYSTEMS

8234 Hansen Rd. | Houston, TX 77075 | (Phone) 713.946.7140 | 800.324.9992

Accent 11

PANEL ATTACHMENT DETAIL



SECTION "A"

NOTES:

1. Always remove the strippable protective film prior to installation or exposure to sunlight. Failure to do this will result in permanent adherence of the film or its adhesive to the painted surface.
2. Panel attachment is similar whether being used as a liner, fascia, or soffit panel.



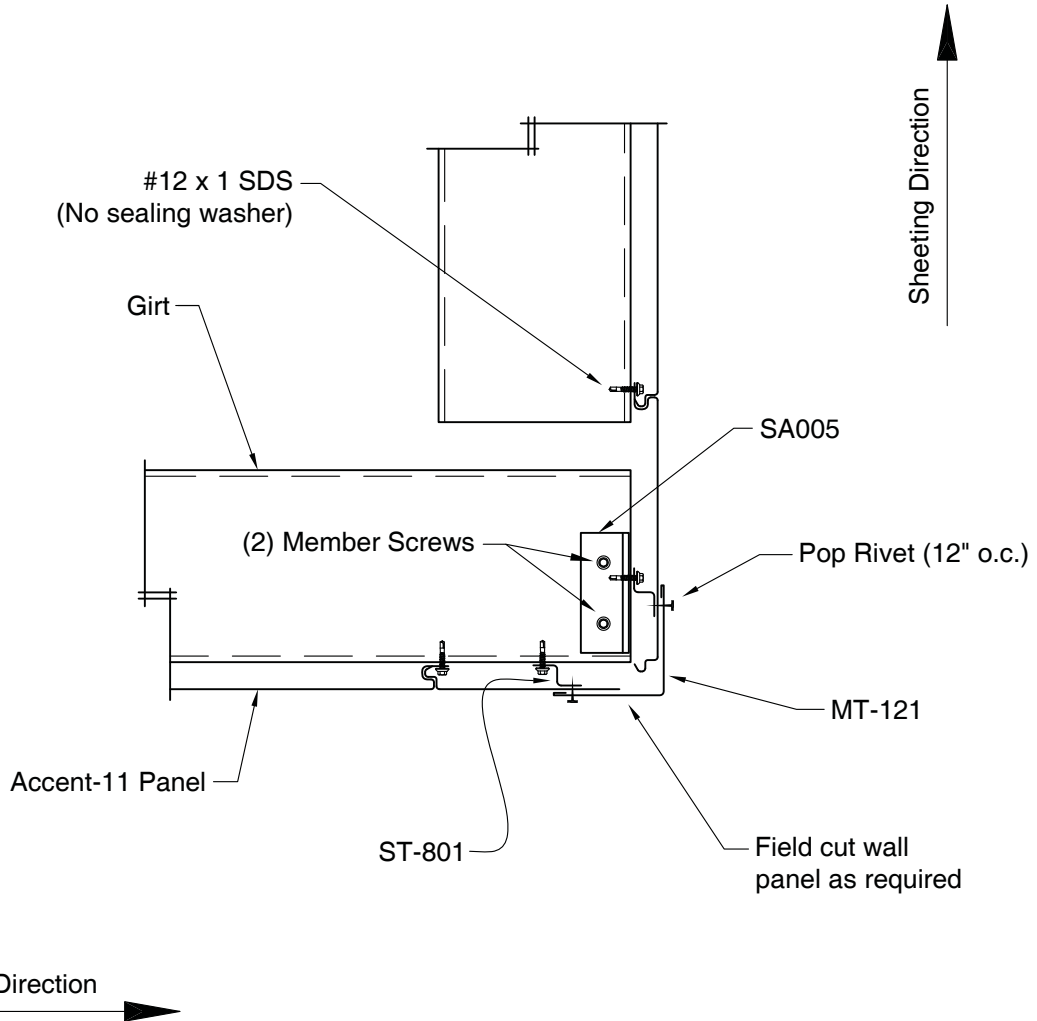
WHIRLWIND STEEL BUILDINGS, INC.

BUILDING SYSTEMS | BUILDING COMPONENTS | SOLAR ENERGY SYSTEMS

8234 Hansen Rd. | Houston, TX 77075 | (Phone) 713.946.7140 | 800.324.9992

Accent 11

OUTSIDE CORNER DETAIL





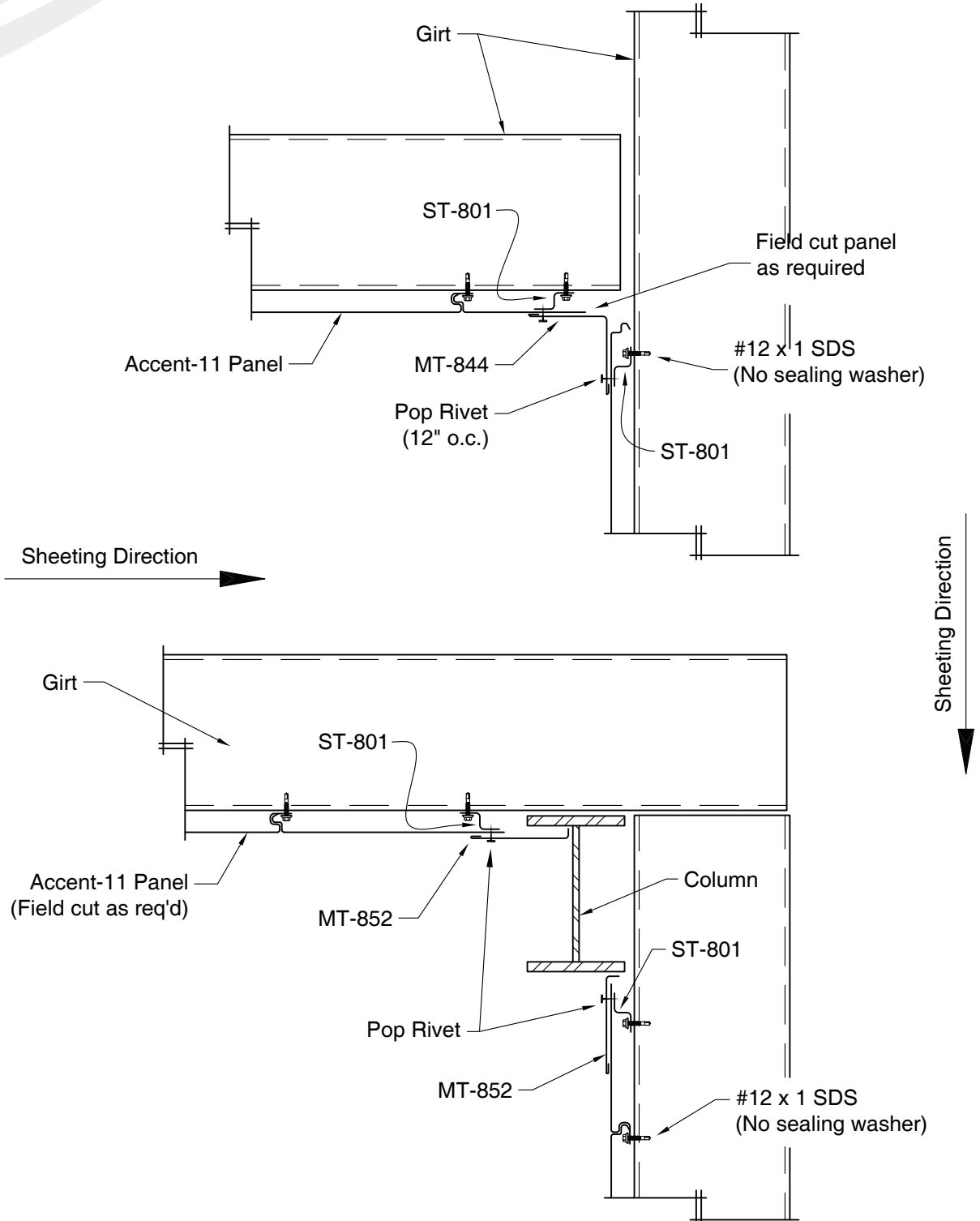
WHIRLWIND STEEL BUILDINGS, INC.

BUILDING SYSTEMS | BUILDING COMPONENTS | SOLAR ENERGY SYSTEMS

8234 Hansen Rd. | Houston, TX 77075 | (Phone) 713.946.7140 | 800.324.9992

Accent 11

INSIDE CORNER DETAILS





WHIRLWIND STEEL BUILDINGS, INC.

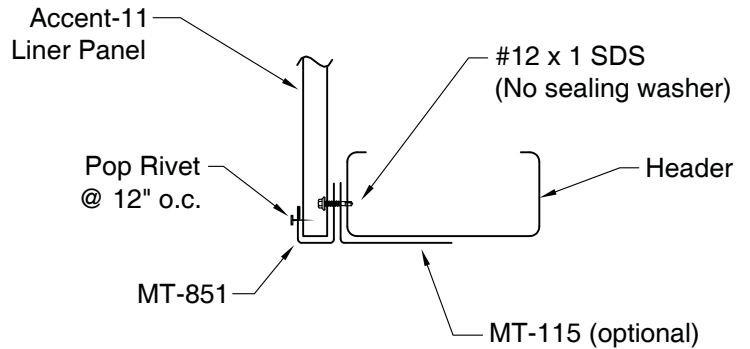
BUILDING SYSTEMS | BUILDING COMPONENTS | SOLAR ENERGY SYSTEMS

8234 Hansen Rd. | Houston, TX 77075 | (Phone) 713.946.7140 | 800.324.9992

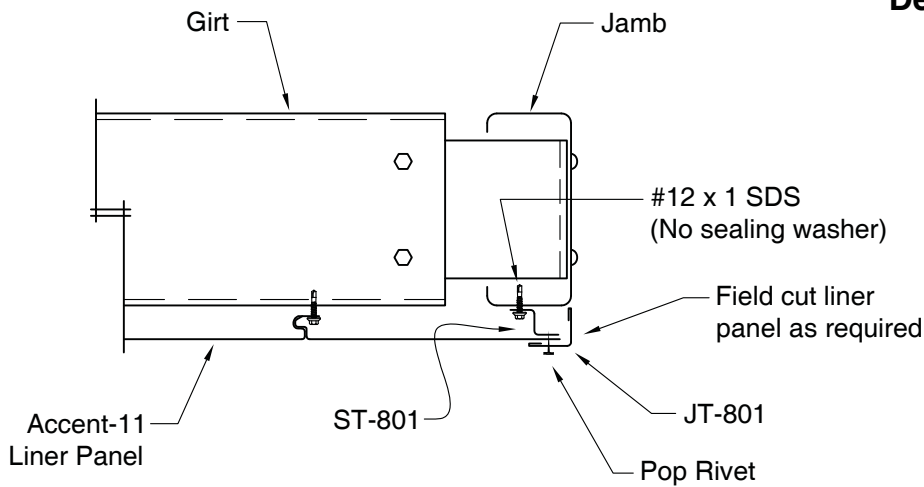
Accent 11

LINER AT FRAMED OPENING

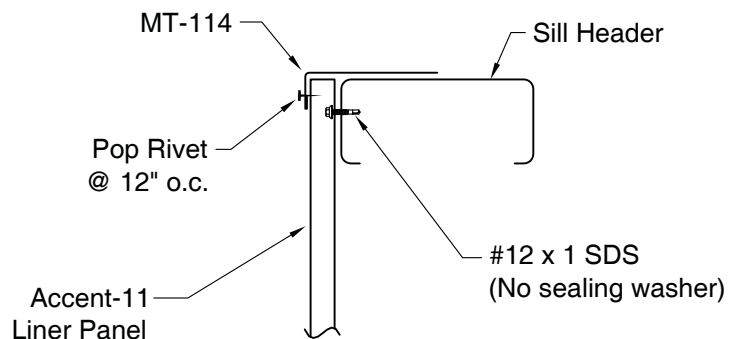
Note:
For clarity, the exterior wall panels are not shown.



Detail at Header



Detail at Jamb



Detail at Sill



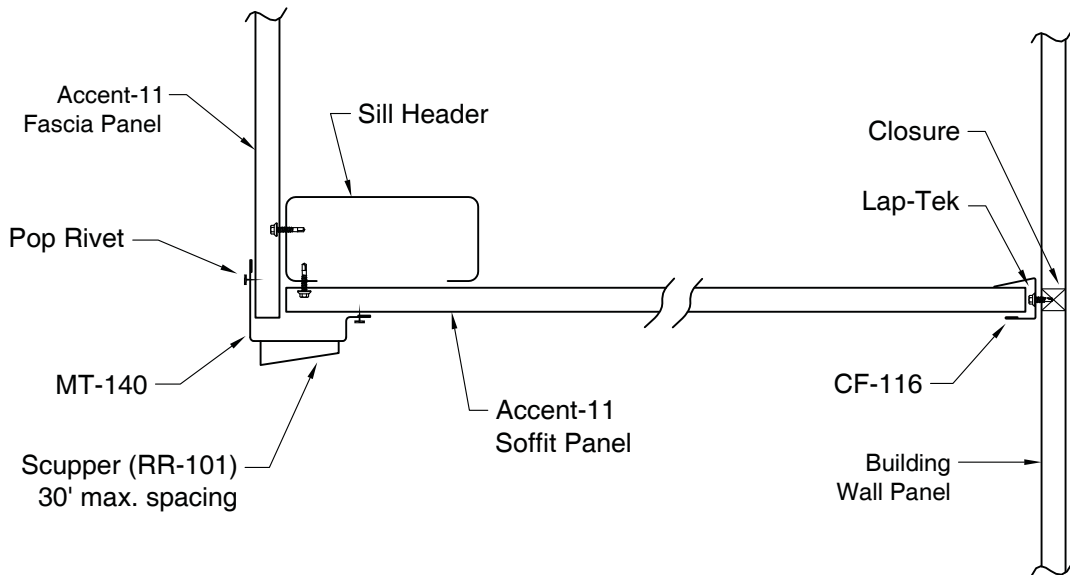
WHIRLWIND STEEL BUILDINGS, INC.

BUILDING SYSTEMS | BUILDING COMPONENTS | SOLAR ENERGY SYSTEMS

8234 Hansen Rd. | Houston, TX 77075 | (Phone) 713.946.7140 | 800.324.9992

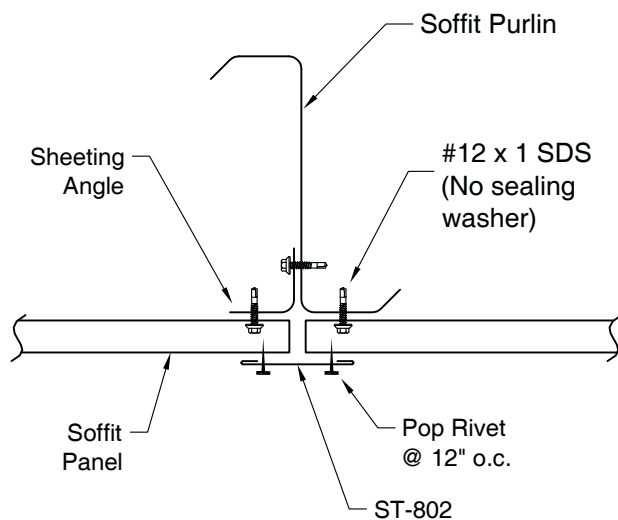
Accent 11

SOFFIT AND FASCIA DETAILS

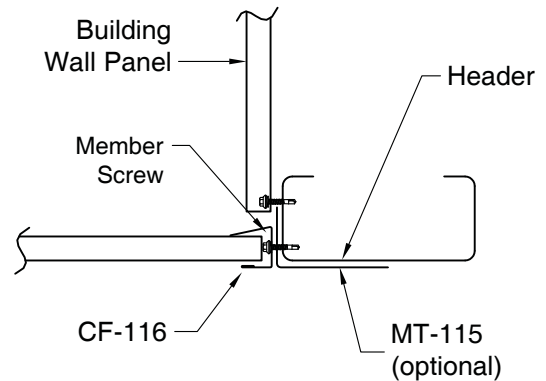


Note:

All exposed fasteners in the soffit area are pop rivets



Detail at Soffit Panel Splice



Open Wall Below Soffit



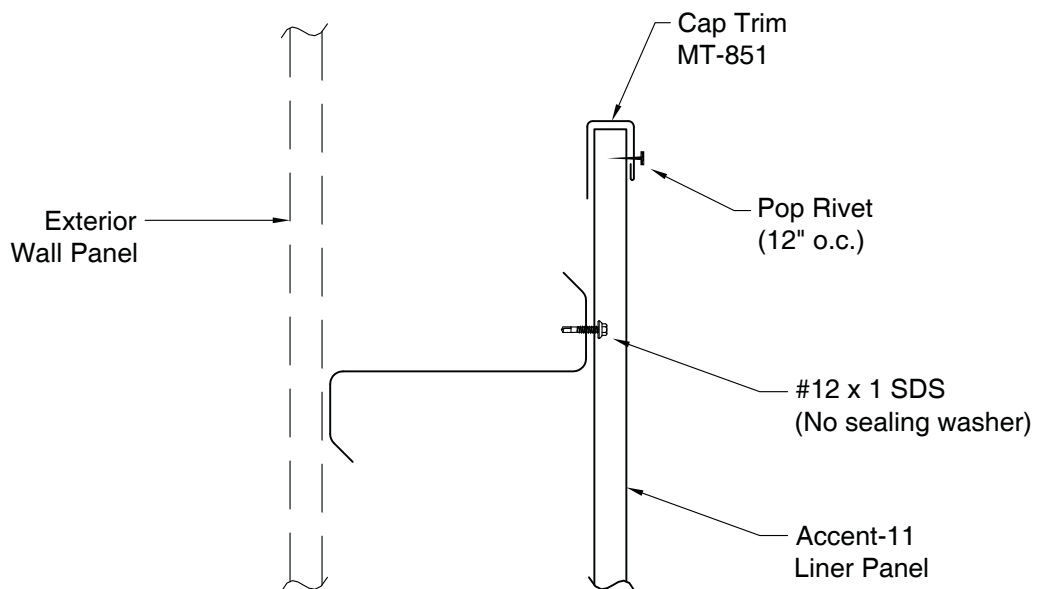
WHIRLWIND STEEL BUILDINGS, INC.

BUILDING SYSTEMS | BUILDING COMPONENTS | SOLAR ENERGY SYSTEMS

8234 Hansen Rd. | Houston, TX 77075 | (Phone) 713.946.7140 | 800.324.9992

Accent 11

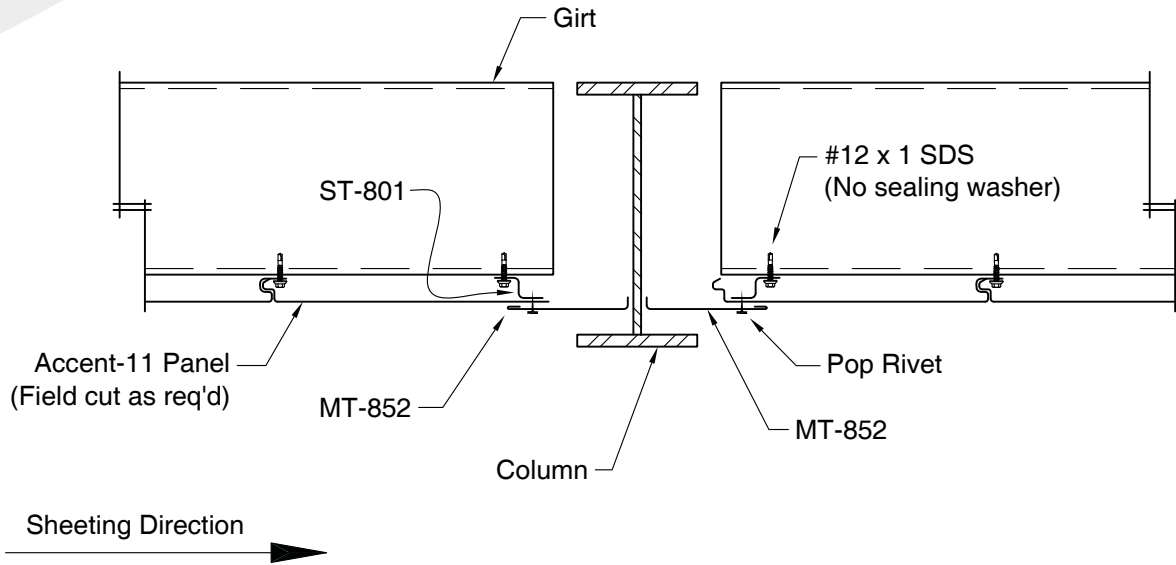
LINER CAP TRIM DETAIL





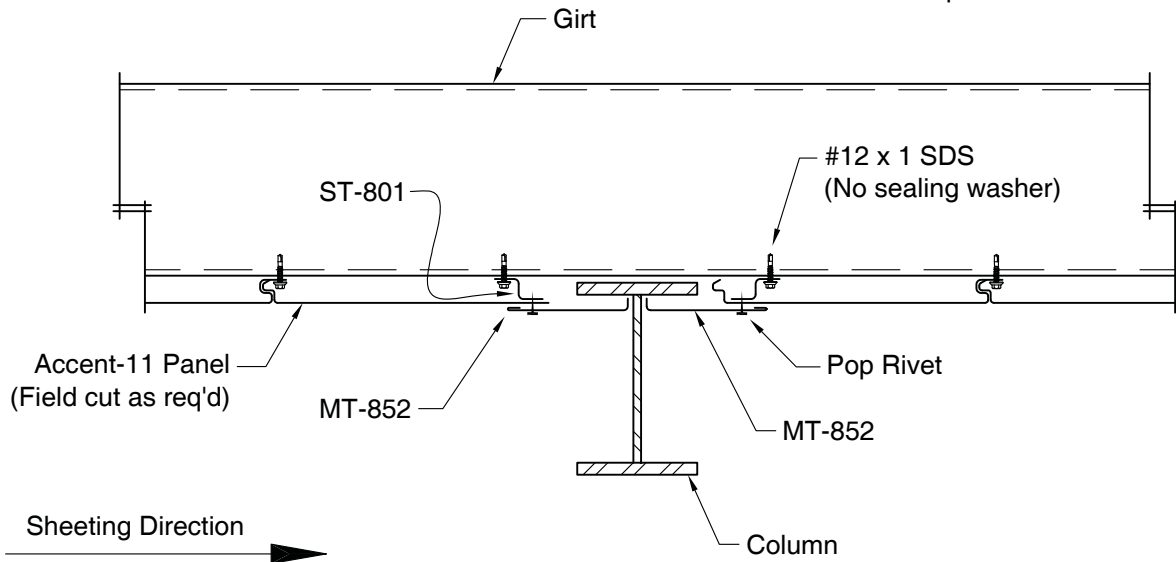
Accent 11

LINER AT COLUMN DETAILS



Flush Girts - Column Depth Greater Than Girt Depth

Note:
For clarity, the exterior wall panels are not shown.



By-Pass Girts - Column Inside Girt Line



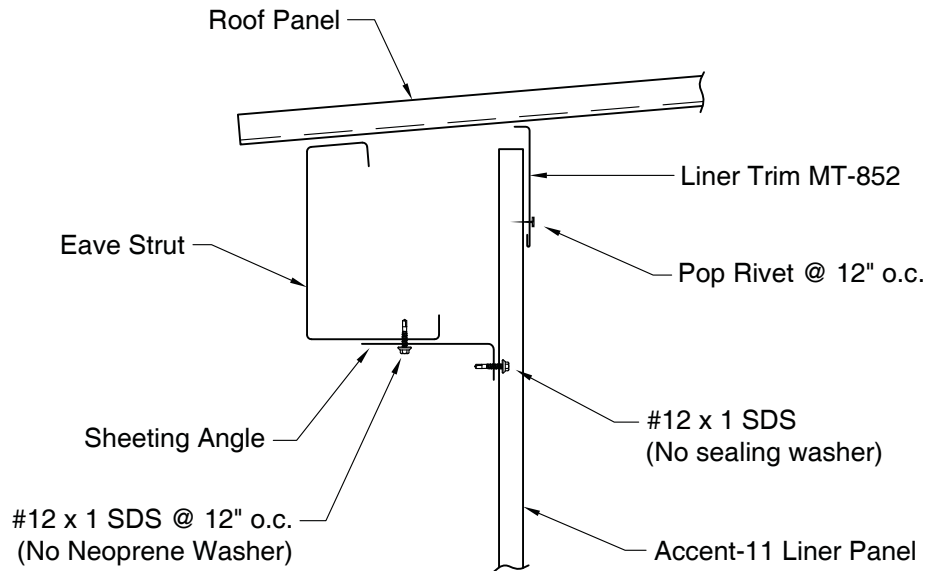
WHIRLWIND STEEL BUILDINGS, INC.

BUILDING SYSTEMS | BUILDING COMPONENTS | SOLAR ENERGY SYSTEMS

8234 Hansen Rd. | Houston, TX 77075 | (Phone) 713.946.7140 | 800.324.9992

Accent 11

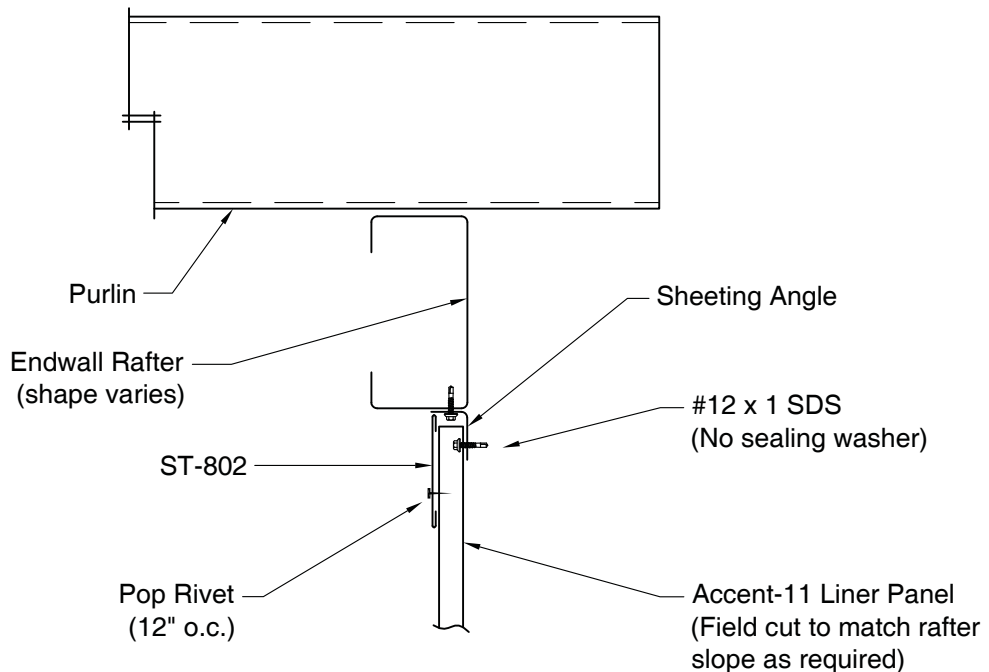
LINER TO ROOF DETAILS



Detail at Eave

Note:

For clarity, the exterior wall panels are not shown.



Detail at Endwall



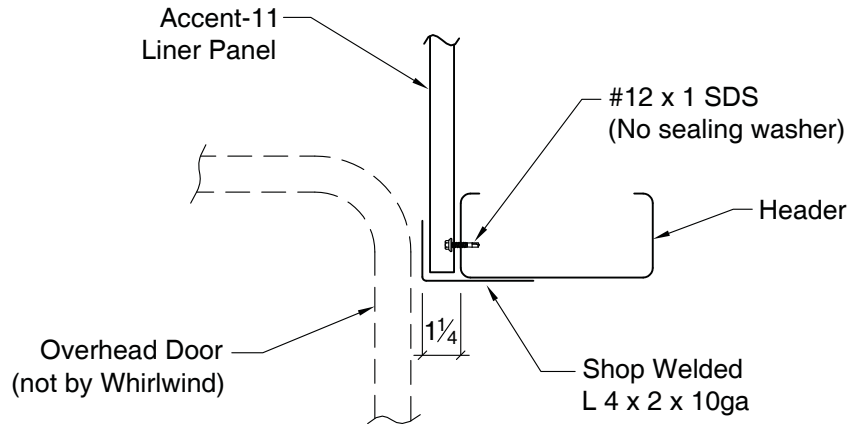
WHIRLWIND STEEL BUILDINGS, INC.

BUILDING SYSTEMS | BUILDING COMPONENTS | SOLAR ENERGY SYSTEMS

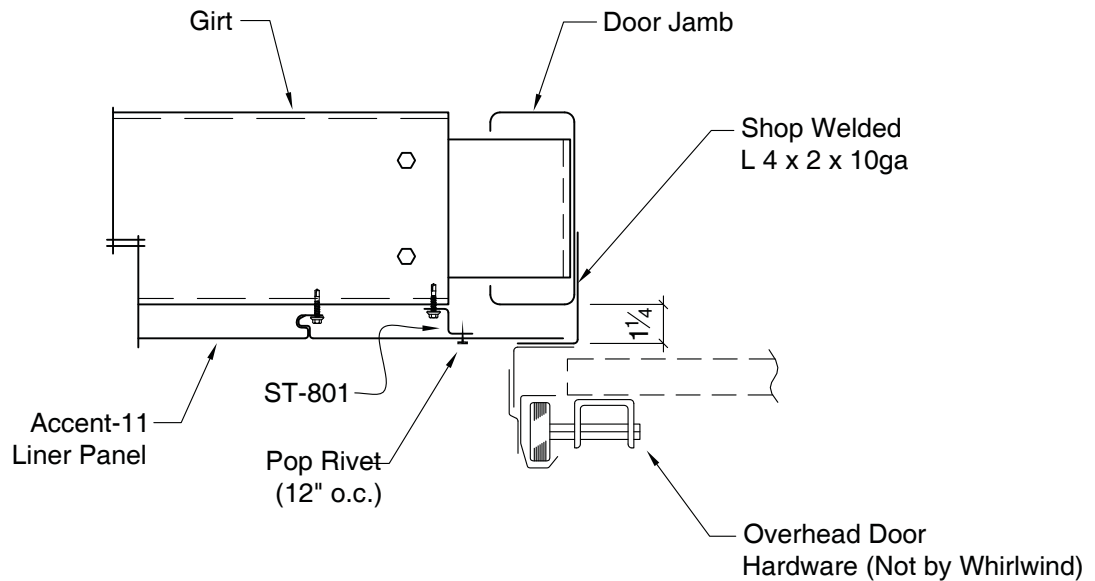
8234 Hansen Rd. | Houston, TX 77075 | (Phone) 713.946.7140 | 800.324.9992

Accent 11

LINER AT OVERHEAD DOOR



Detail at Header



Detail at Jamb

NOTES:

1. For clarity, the exterior wall panels are not shown.
2. These details apply only when liner panel is furnished above the framed opening.
3. The overhead door recess must be adjusted for the liner panel.



**WHIRLWIND STEEL BUILDINGS, INC.
CORPORATE HEADQUARTERS - TEXAS**

8234 HANSEN ROAD • HOUSTON, TX 77075
713.946.7140 • 800.324.9992 • FAX: 832.553.4992

ADDITIONAL COMPONENT MANUFACTURING LOCATIONS:

OKLAHOMA

2450 E.L. ANDERSON BLVD • CLAREMORE, OK 74017
918.343.1973 • 877.875.0077 • FAX: 918.343.7114

GEORGIA

2175 SWEETWATER INDUSTRIAL BLVD. • LITHIA SPRINGS, GA 30122
770.739.8339 • 800.363.8142 • FAX: 770.739.1226

MINNESOTA

500 WHIRLWIND DR. • FREEPORT, MN 56331
320.836.7200 • 888.836.7203 • FAX: 320.836.7201